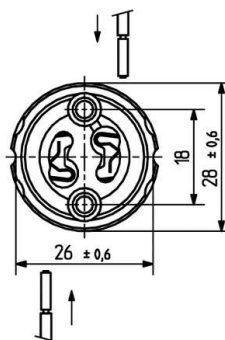
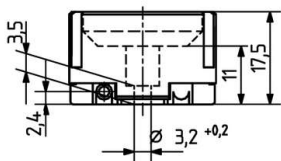


 Create pdf

Lampholders for mains voltage halogen lamps

25.829.2000

GU10



| pkg. | wt. | part no. |
|------|------|----------------|
| 500 | 15 g | 25.829.2000.00 |

Connection: Push wire contacts for diagonal side wiring



Approval: additional cURus (200° C)

Screw fixing

Housing: Ceramic / PPS

Contacts: CrNi

- Wires permanently joined after insertion
- The correct function is obtained by screw fixing or by combination with snap in insulating caps 25.919.-30x

| | | | |
|------|---|---|--------------|
| T250 |  |  | 2 A 250 V |
| | | max. ø 1.8 mm | |

Document generated on: Th, 9. February 2017 - 15:51